

### SCHEDULE OF JOINERIES

|      |                  |           |
|------|------------------|-----------|
| MD   | MAIN DOOR        | 1-83X2-14 |
| MDI  | DOOR             | .89X2-14  |
| D    | "                | .89X2-14  |
| D2   | "                | .76X2-14  |
| D/W  | DOOR WITH WINDOW | 1-83X2-14 |
| W    | "                | 1-83X1-37 |
| W1   | "                | 1-22X1-37 |
| W2   | "                | .61X1-61  |
| W3   | "                | .76X1-37  |
| W4   | "                | 1-22X2-14 |
| W5   | "                | 1-83X2-14 |
| W6   | "                | 1-83X2-14 |
| W7   | "                | 1-83X2-14 |
| W8   | "                | 1-83X2-14 |
| W9   | "                | 1-83X2-14 |
| W10  | "                | 1-83X2-14 |
| W11  | "                | 1-83X2-14 |
| W12  | "                | 1-83X2-14 |
| W13  | "                | 1-83X2-14 |
| W14  | "                | 1-83X2-14 |
| W15  | "                | 1-83X2-14 |
| W16  | "                | 1-83X2-14 |
| W17  | "                | 1-83X2-14 |
| W18  | "                | 1-83X2-14 |
| W19  | "                | 1-83X2-14 |
| W20  | "                | 1-83X2-14 |
| W21  | "                | 1-83X2-14 |
| W22  | "                | 1-83X2-14 |
| W23  | "                | 1-83X2-14 |
| W24  | "                | 1-83X2-14 |
| W25  | "                | 1-83X2-14 |
| W26  | "                | 1-83X2-14 |
| W27  | "                | 1-83X2-14 |
| W28  | "                | 1-83X2-14 |
| W29  | "                | 1-83X2-14 |
| W30  | "                | 1-83X2-14 |
| W31  | "                | 1-83X2-14 |
| W32  | "                | 1-83X2-14 |
| W33  | "                | 1-83X2-14 |
| W34  | "                | 1-83X2-14 |
| W35  | "                | 1-83X2-14 |
| W36  | "                | 1-83X2-14 |
| W37  | "                | 1-83X2-14 |
| W38  | "                | 1-83X2-14 |
| W39  | "                | 1-83X2-14 |
| W40  | "                | 1-83X2-14 |
| W41  | "                | 1-83X2-14 |
| W42  | "                | 1-83X2-14 |
| W43  | "                | 1-83X2-14 |
| W44  | "                | 1-83X2-14 |
| W45  | "                | 1-83X2-14 |
| W46  | "                | 1-83X2-14 |
| W47  | "                | 1-83X2-14 |
| W48  | "                | 1-83X2-14 |
| W49  | "                | 1-83X2-14 |
| W50  | "                | 1-83X2-14 |
| W51  | "                | 1-83X2-14 |
| W52  | "                | 1-83X2-14 |
| W53  | "                | 1-83X2-14 |
| W54  | "                | 1-83X2-14 |
| W55  | "                | 1-83X2-14 |
| W56  | "                | 1-83X2-14 |
| W57  | "                | 1-83X2-14 |
| W58  | "                | 1-83X2-14 |
| W59  | "                | 1-83X2-14 |
| W60  | "                | 1-83X2-14 |
| W61  | "                | 1-83X2-14 |
| W62  | "                | 1-83X2-14 |
| W63  | "                | 1-83X2-14 |
| W64  | "                | 1-83X2-14 |
| W65  | "                | 1-83X2-14 |
| W66  | "                | 1-83X2-14 |
| W67  | "                | 1-83X2-14 |
| W68  | "                | 1-83X2-14 |
| W69  | "                | 1-83X2-14 |
| W70  | "                | 1-83X2-14 |
| W71  | "                | 1-83X2-14 |
| W72  | "                | 1-83X2-14 |
| W73  | "                | 1-83X2-14 |
| W74  | "                | 1-83X2-14 |
| W75  | "                | 1-83X2-14 |
| W76  | "                | 1-83X2-14 |
| W77  | "                | 1-83X2-14 |
| W78  | "                | 1-83X2-14 |
| W79  | "                | 1-83X2-14 |
| W80  | "                | 1-83X2-14 |
| W81  | "                | 1-83X2-14 |
| W82  | "                | 1-83X2-14 |
| W83  | "                | 1-83X2-14 |
| W84  | "                | 1-83X2-14 |
| W85  | "                | 1-83X2-14 |
| W86  | "                | 1-83X2-14 |
| W87  | "                | 1-83X2-14 |
| W88  | "                | 1-83X2-14 |
| W89  | "                | 1-83X2-14 |
| W90  | "                | 1-83X2-14 |
| W91  | "                | 1-83X2-14 |
| W92  | "                | 1-83X2-14 |
| W93  | "                | 1-83X2-14 |
| W94  | "                | 1-83X2-14 |
| W95  | "                | 1-83X2-14 |
| W96  | "                | 1-83X2-14 |
| W97  | "                | 1-83X2-14 |
| W98  | "                | 1-83X2-14 |
| W99  | "                | 1-83X2-14 |
| W100 | "                | 1-83X2-14 |

APPROVED  
 SUBJECT TO THE CONDITIONS IN THIS OFFICE LETTER  
 FOR MEMBER SECRETARY  
 MADRAS METROPOLITAN  
 DEVELOPMENT AUTHORITY  
 MADRAS - 600 008.

GENERAL SPECIFICATION  
 FOUNDATION BED IN P.C.C 1:5:10, OVER 12" THK SAND FILLING. BRICK WORK IN C.M 1:6 USING 1" CLASS STEEL BRICKS. ALL R.C.C. WORK IN MIX 1:2:4 TO REINFORCED THICK. PLASTERING FOR CEILING IN C.M 1:3, 12MM THICK. PLASTERING FOR WALLS IN C.M 1:5, 12MM THICK. FLOORING IN P.C.C 1:8:10, 1/2" THICK. FLOOR FINISHED WITH MOSAIC TILES.  
 SCALE 1"=8'-0" OR 1:100

AREA STATEMENT  
 GROUND FLOOR AREA = 218.67 SQ.M  
 FIRST FLOOR AREA = 300.09 SQ.M  
 SECOND FLOOR AREA = 300.09 SQ.M  
 THIRD FLOOR AREA = 272.49 SQ.M  
 TOTAL AREA = 1091.34 SQ.M

REFERENCE  
 PROPOSED  
 ROAD  
 BOUNDARY

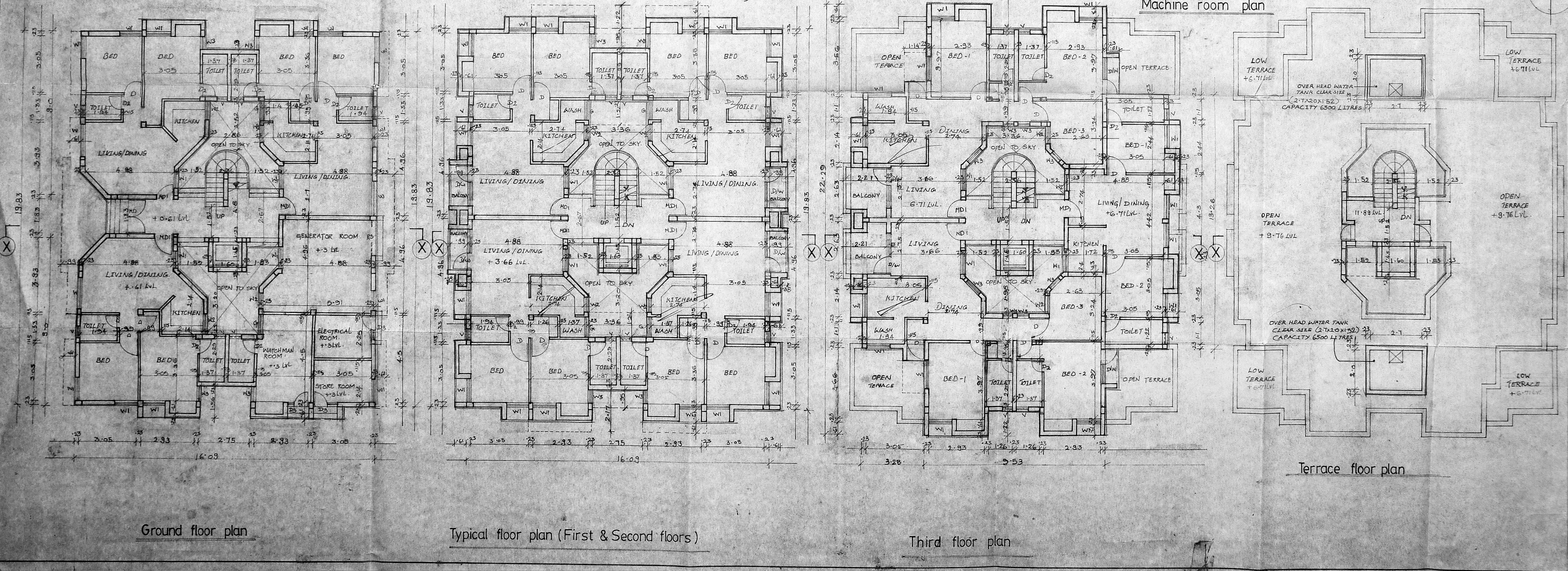
NOTE:  
 ALL DIMENSIONS ARE IN METRE

PLAN SHOWING RESIDENTIAL UNITS AT RS No. 128/1, 128/4, 129/1 OF NADVAKKARAI VILLAGE ANNA NAGAR, MADRAS

ARCHITECTS:  
**AMAR & BALA**  
 35 SEVARAJA MUDALI STREET,  
 MADRAS-3

OWNER:  
 N. Balachander

N. BALACHANDER  
 ARCHITECT  
 License No: R.A. 182  
 CA/26/100B  
 LICENSED SURVEYOR



Ground floor plan

Typical floor plan (First & Second floors)

Third floor plan

Terrace floor plan